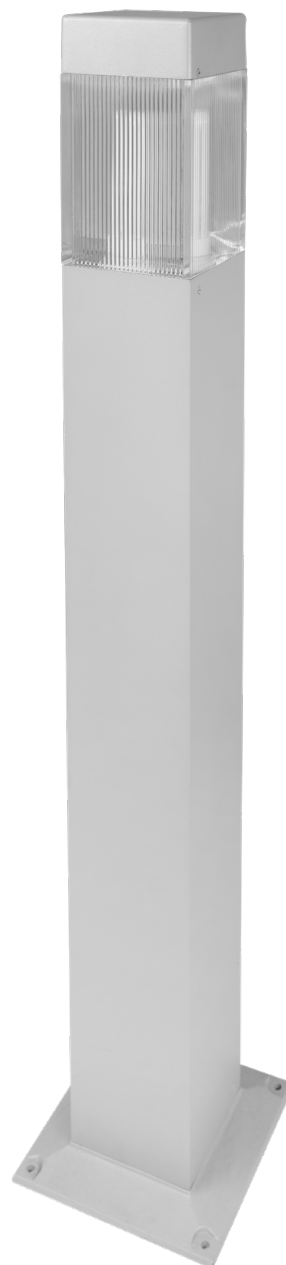
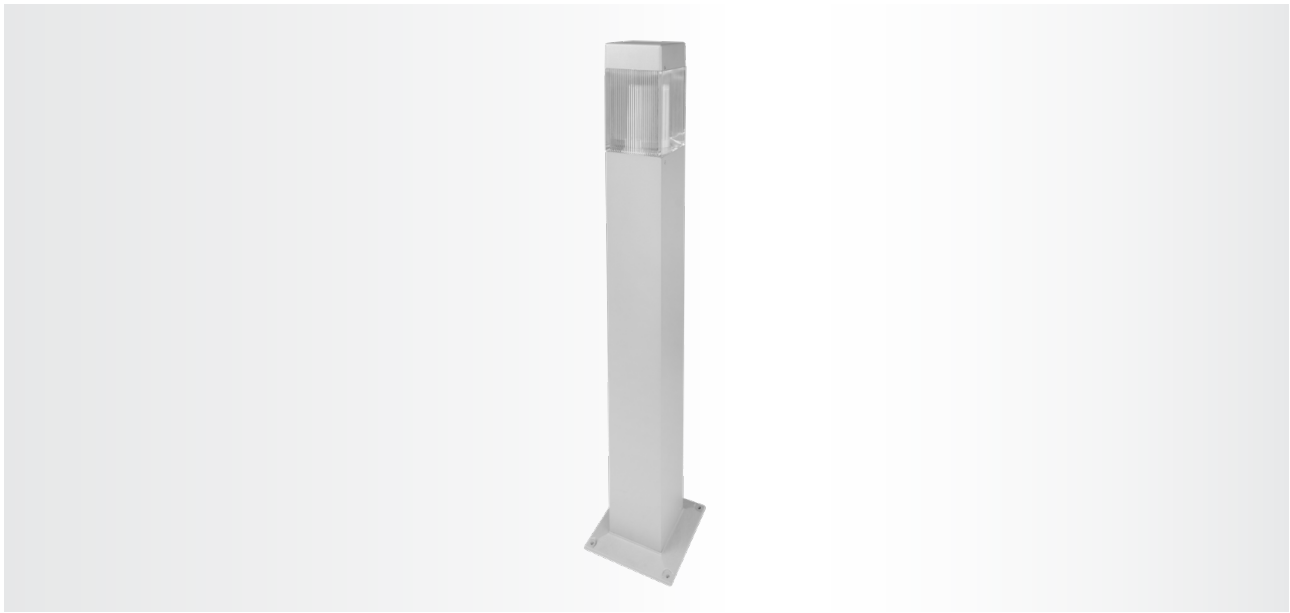






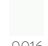
8050 Bollards

The Bollard 8050 showcases a square, minimalist design that functions not only as an effective lighting element but also as a decorative feature that enhances its surroundings. Expertly crafted, the body of the Bollard 8050 is made from durable aluminum and protected with a specialized corrosion-resistant coating. Additionally, the fixture undergoes an electrostatic painting process to ensure long-lasting resilience in harsh outdoor environments. Equipped with prismatic acrylic glass, the luminaire offers high light permeability while resisting yellowing over time. This prismatic glass diffuses the emitted light, providing a softened illumination that is especially beneficial in applications requiring vertical lighting, such as urban and site environments. Balancing functionality with refined aesthetics, the Bollard 8050 is a sophisticated lighting solution designed to enrich spaces that demand both effective illumination and elegant visual appeal.





RAL COLORS

- Std.  9007
- Opt.  9005
-  9006
-  7016
-  9016

8050

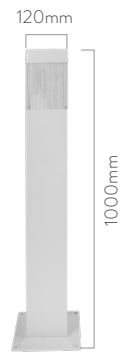


Code	Luminous Flux	System Power	Weight
8050	700~1.000 lm	15~22 W	5.2 kg

Body: Aluminum
Led: Mid-Power Led

Front Glass: PMMA
Voltage: 220~240 VAC

Color Temperature: 3000-4000-5000K, R-G-B
Diffuser: Opal or Prismatic



BOX DIMENSIONS
21x21x104cm



BOX WEIGHT
5.7 kg